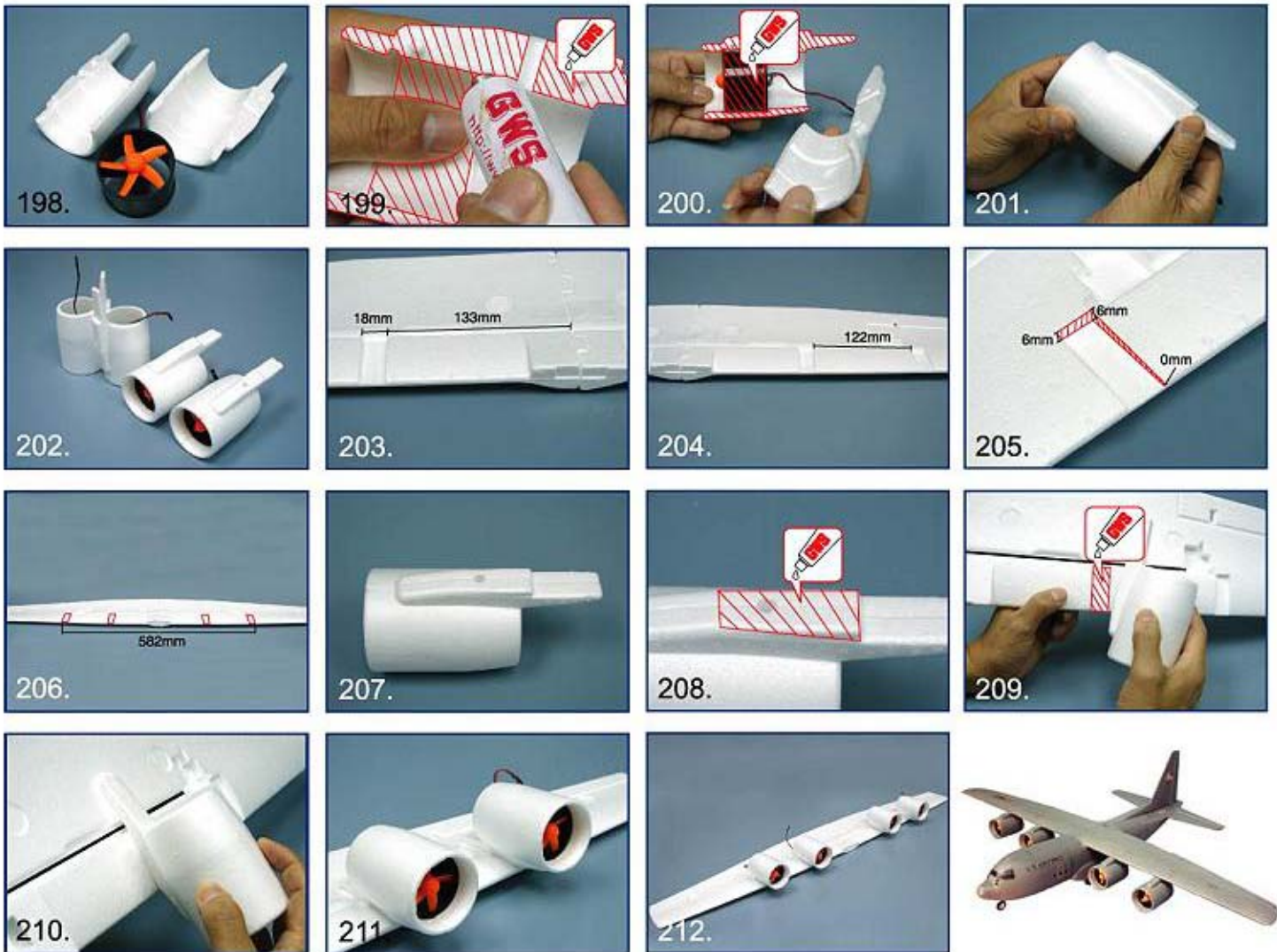


Cargotrans EDF50*4 Instruction

導風扇組合說明



- Get EDF50 ducted fan and the nacelles. Apply GWS glue as shown in the area marked. (Pic. 198, 199, 200)
 - Assemble the ducted fans (4 set of ducted fans).(Pic. 201, 202)
 - Get the main wing and mark the positions for the ducted fan mounts as shown in the photos. Use hobby knife to create the grooves for the ducted fan mounts. See the photo for the detail.(Pic. 203, 204, 205)
 - The main wing before you install the ducted fans.(Pic. 206)
 - Apply GWS glue to the marked area.(Pic. 207, 208)
 - Install the carbon fiber rod first and then install/glue the ducted fans on to the main wing.(Pic. 209, 210, 211,212)
 - Nacelles mounting reference: Downthrust not required, Sidethrust not required, either.
-
- 首先拿出EDF50的導風扇零組件，並在虛線上塗上GWS膠水。(圖. 198、199、200)
 - 將導風扇的外殼組合，一共四顆。(圖.201、202)
 - 拿出機翼，依照片上的標示畫出裁切線。左右機翼都要畫，線畫好後請用美工刀將標示的地方小心切除。(圖.203、204、205)
 - 切割完成後的機翼(圖.206)
 - 將黏好的EDF導風扇，延虛線部份塗上膠水(圖.207、208)
 - 並將四顆導風扇以膠水黏合在機翼上，(在黏合導風扇前要先將主翼補強桿黏好喔)。(圖.209、210)
 - 完成後的主翼(圖.211、212)
 - 各風筒(導風扇)推力線不需右偏及向下，皆設定為0度。