

FMS Installation Instruction

GWS MY CART Home Products Contest Gallery Support My Account

FAQ
Download Manuals & Drivers
Where to Buy
Shipping & Return
Contact Us
About Us

Home > Download Manuals & Drivers
July 22, 2014

Download Manuals & Drivers

How to Download Product Manuals (PDF files)

Product manuals are available on the Grand Wing System(GWS) Support website in PDF format. Adobe Acrobat Reader, Preview or Safari (for Mac users) is required to view a manual. To download Acrobat Reader free, visit the [Adobe website](#).

Alplane manual **Accessory manual** Drivers

Brushless Motor

GWS Brushless ESC Programming Card	Download
Outrunners Brushless Motor	Download

AUX Circuits Manual

PGM002 Digital Servo Programmer	Download	C3-LP	Download
QUICK CHARGER-MC2002	Download	V-TAIL MIXER-II	Download
MT-1	Download	PHA300	Download
PHA01	Download		

GYRO SERIES

GYRO PG-01	Download	GYRO PG-02	Download
GYRO PG-03	Download	PC1	Download
PC3	Download		

Speed Controller

ICS	Download
-----	----------

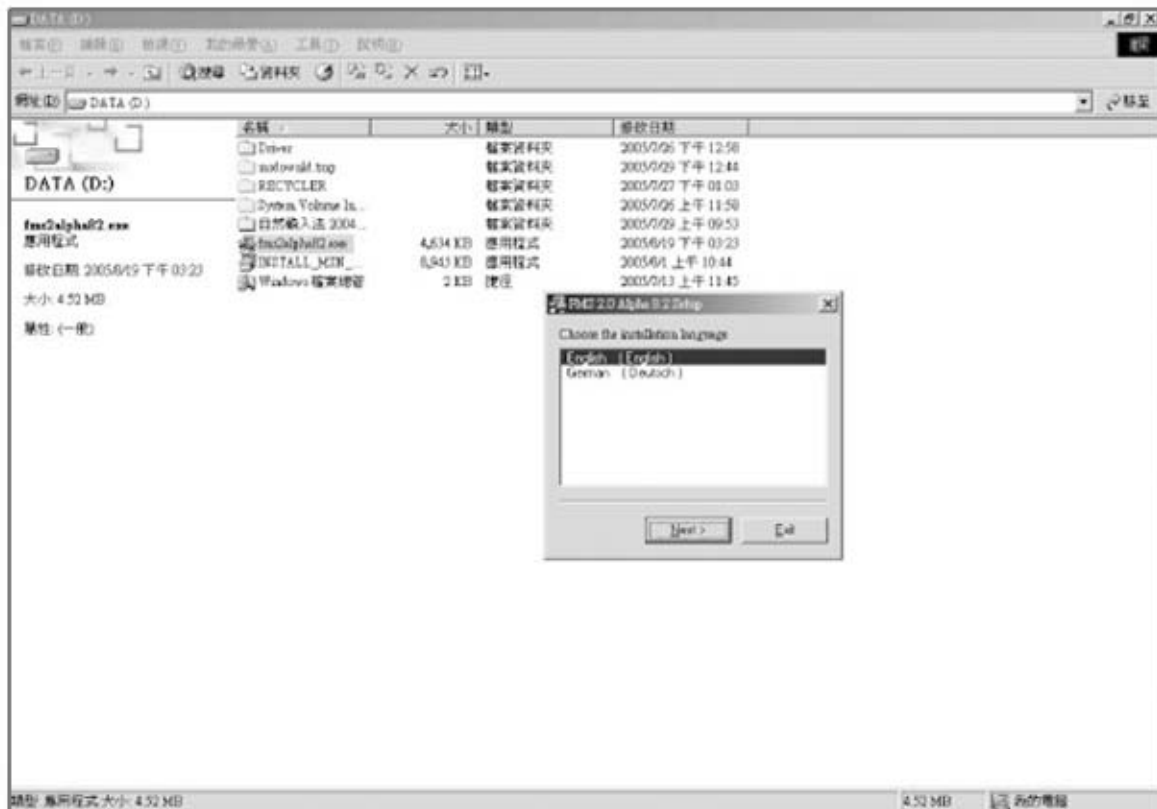
Receiver

RECEIVER RD-8	Download
---------------	----------

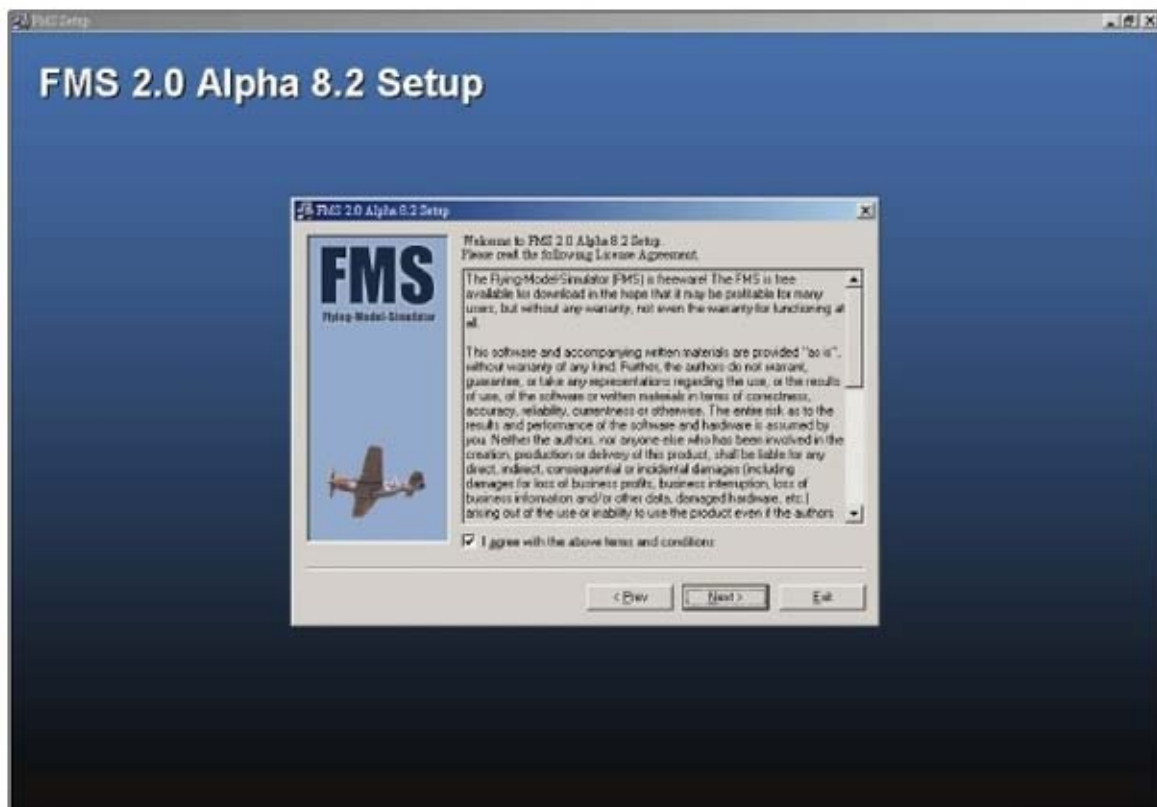
Transmitter

TRANSMITTER 2.4G 4ch	Download	TRANSMITTER T4AII	Download
TRANSMITTER T6A	Download	FMS Installation Instruction	Download
Version 2.0 Alpha 8.5 (Windows 95/98/ME/2000/XP)	Download	Version 2.0 Beta 7 (Windows 9x/ME/2000)	Download

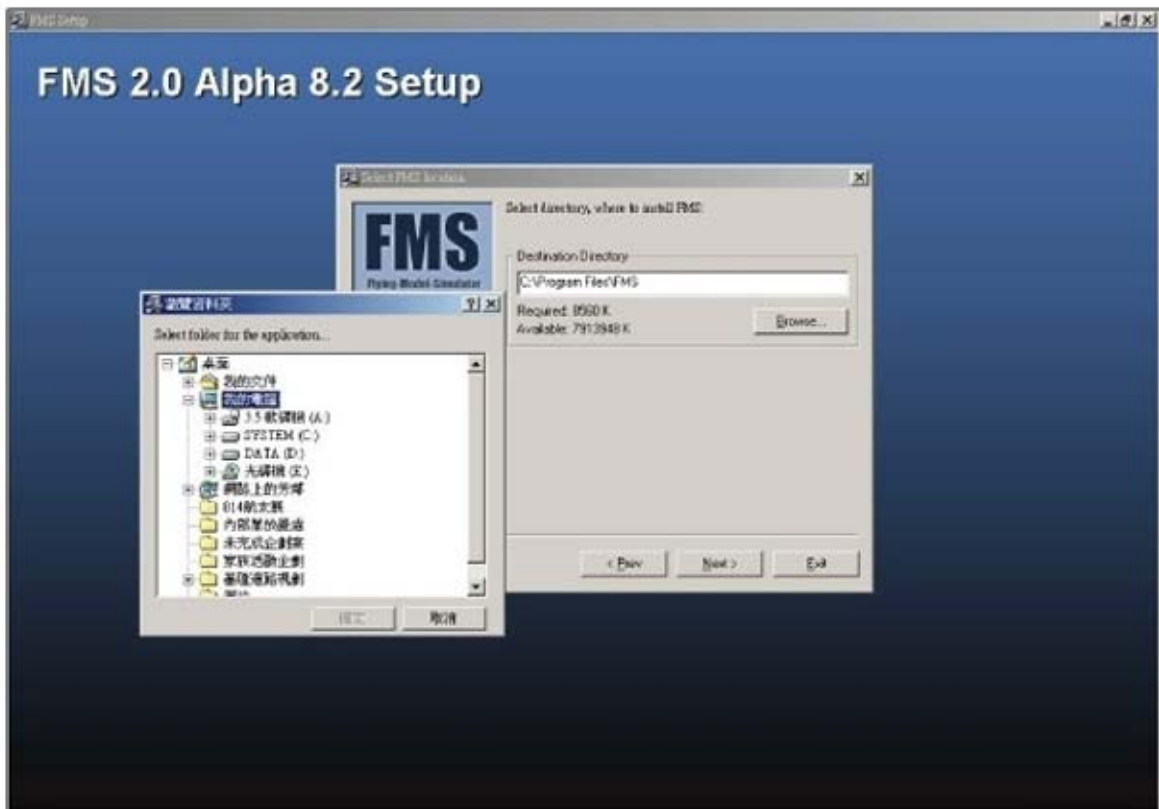
Go to download page and choose the right version for your computer



選擇"English"選項後，選擇"Next"按下。
 Select installation language.

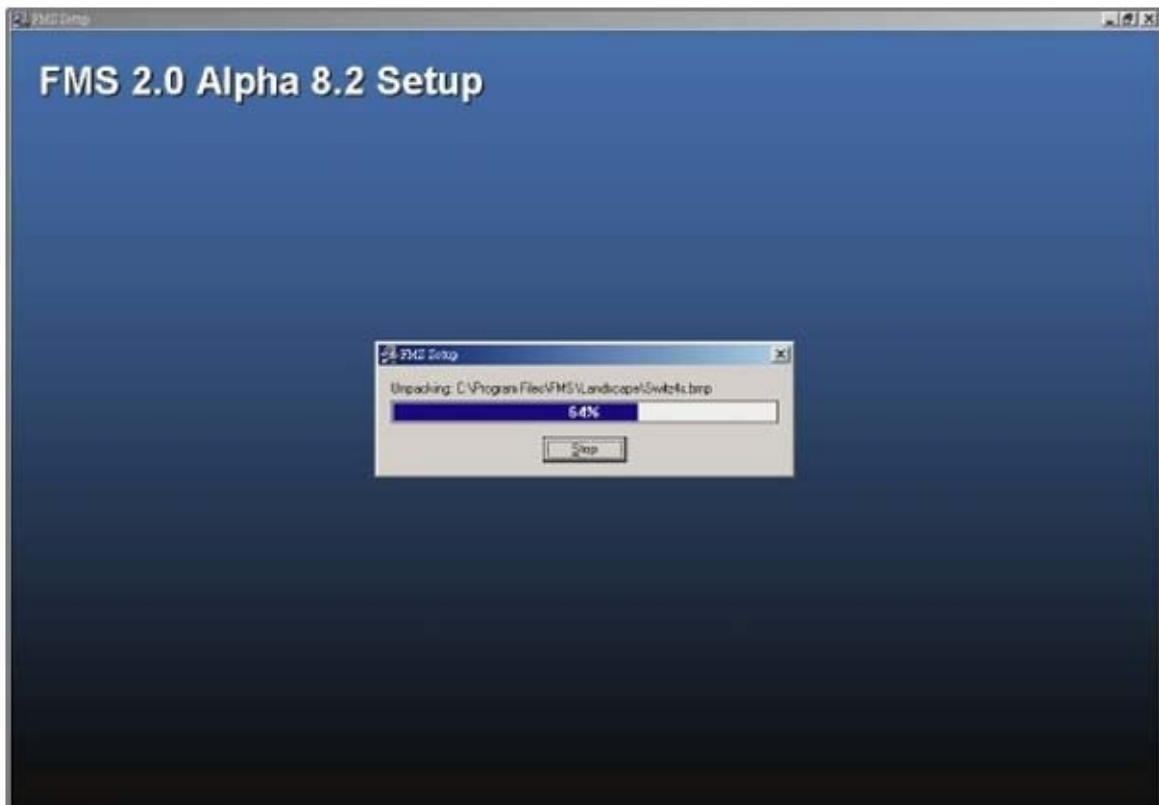


同意官方軟體條約。
 Check — "I agree with the above terms and conditions".



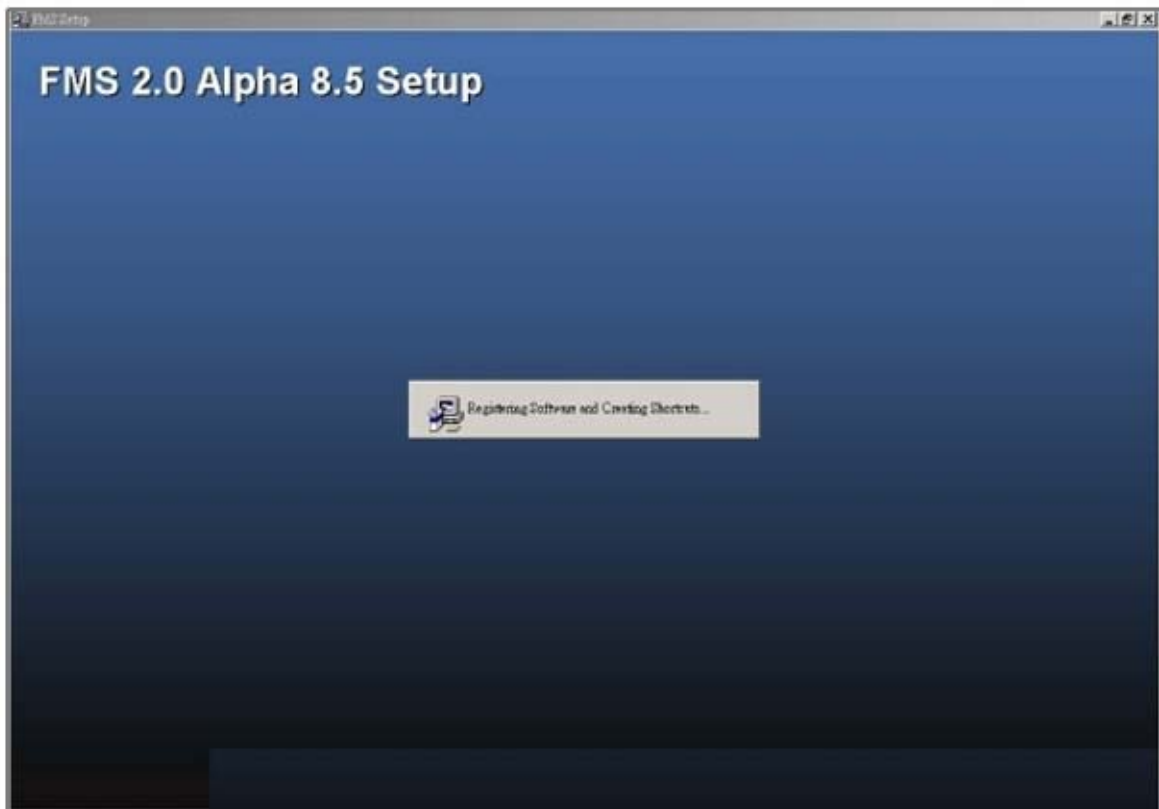
選擇檔案儲存位置。

Select directory to install the FMS.



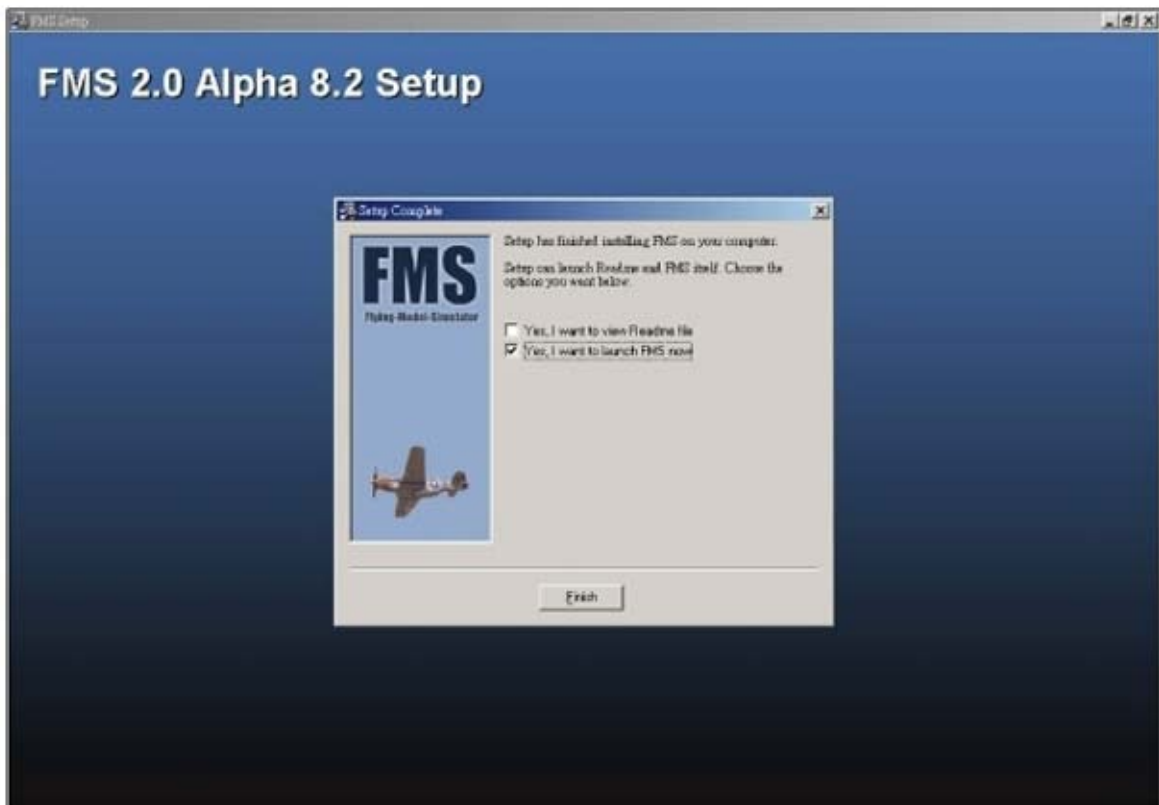
檔案複製中。

Unpacking the software.



檔案執行位置。

Installing.



選擇建立桌面FMS捷徑

Installed completed. Select " Yes, I want to launch FMS now."



電腦自動執行FMS飛行畫面。

Running FMS.



選擇語言” Chinese Traditional” 或是其他適用語言

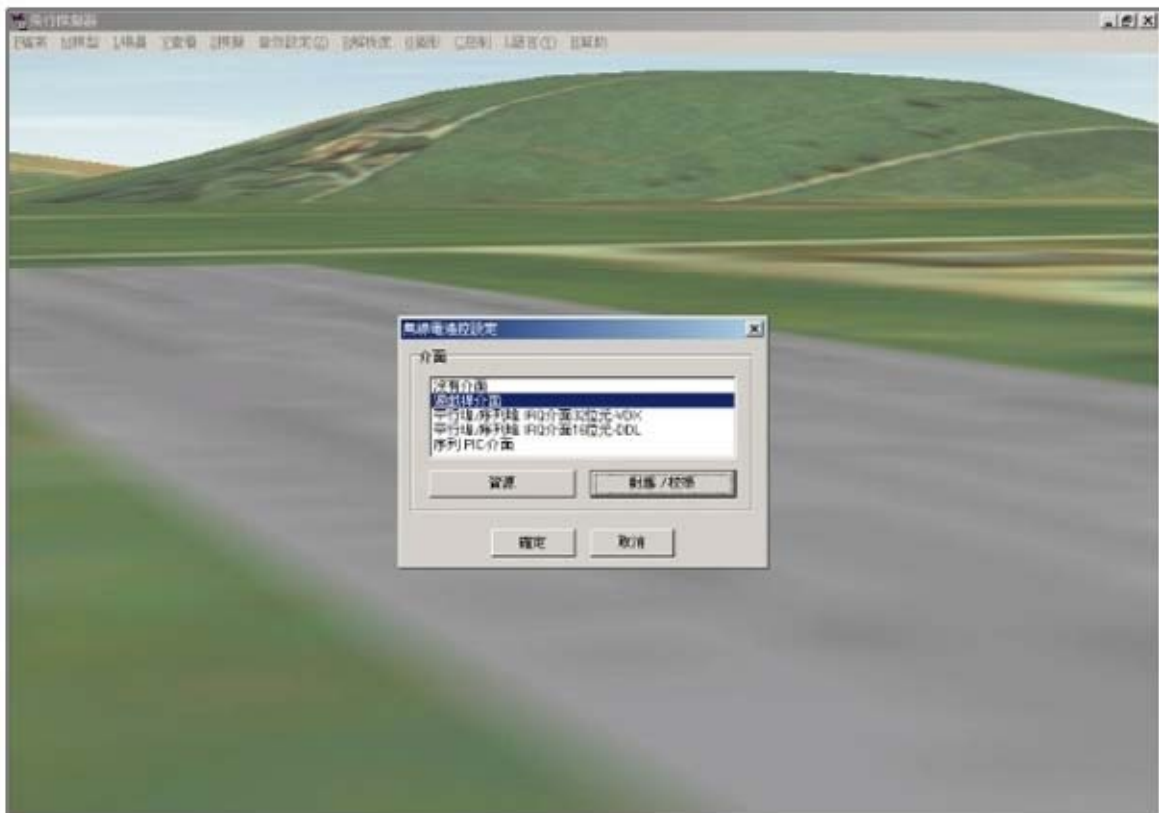
Select Language.



中文化完成。
Chinese version.

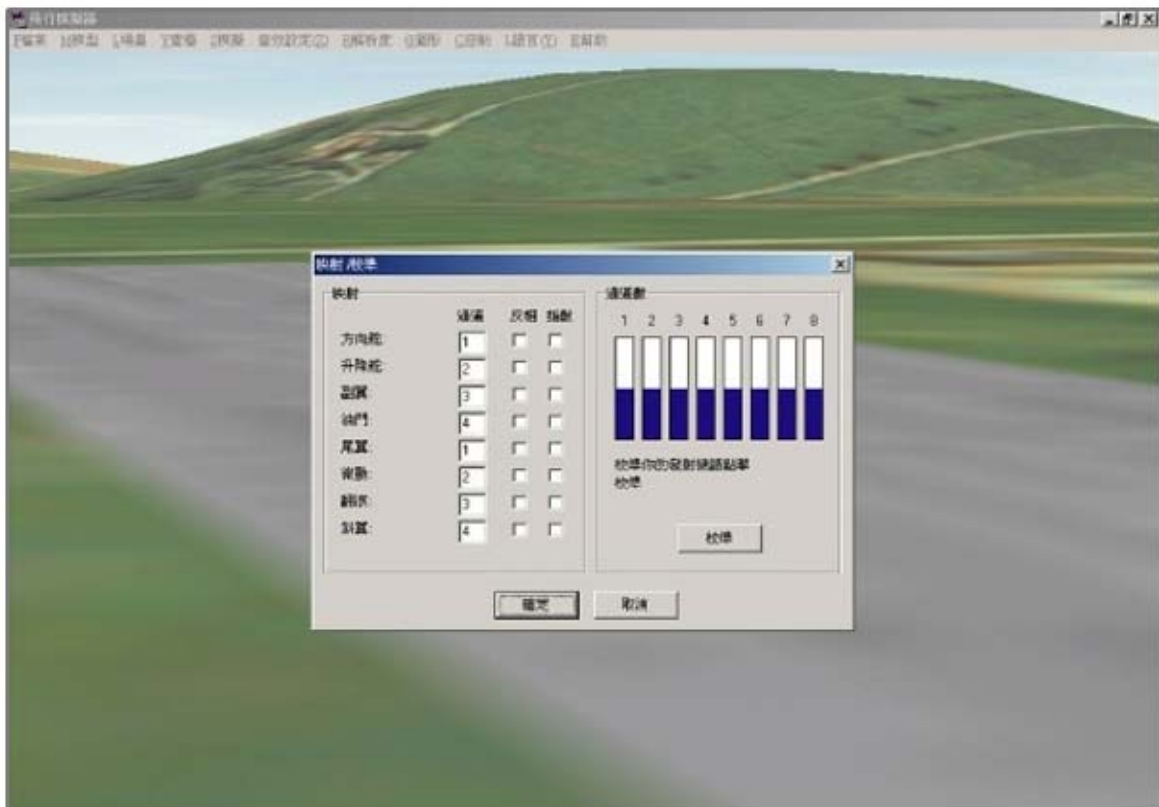


FMS發射器設定。
Under Control tab — select “Analog Control” .



選擇”序列PIC-介面”。

Select "Serial PIC-interface". Click on "Mapping/Calibration".



開始校正設定。

Left: Mapping the channel to your transmitter.

Right: Calibrating PC and your transmitter.



可以開始使用FMS飛行模擬器。

Ready to fly.